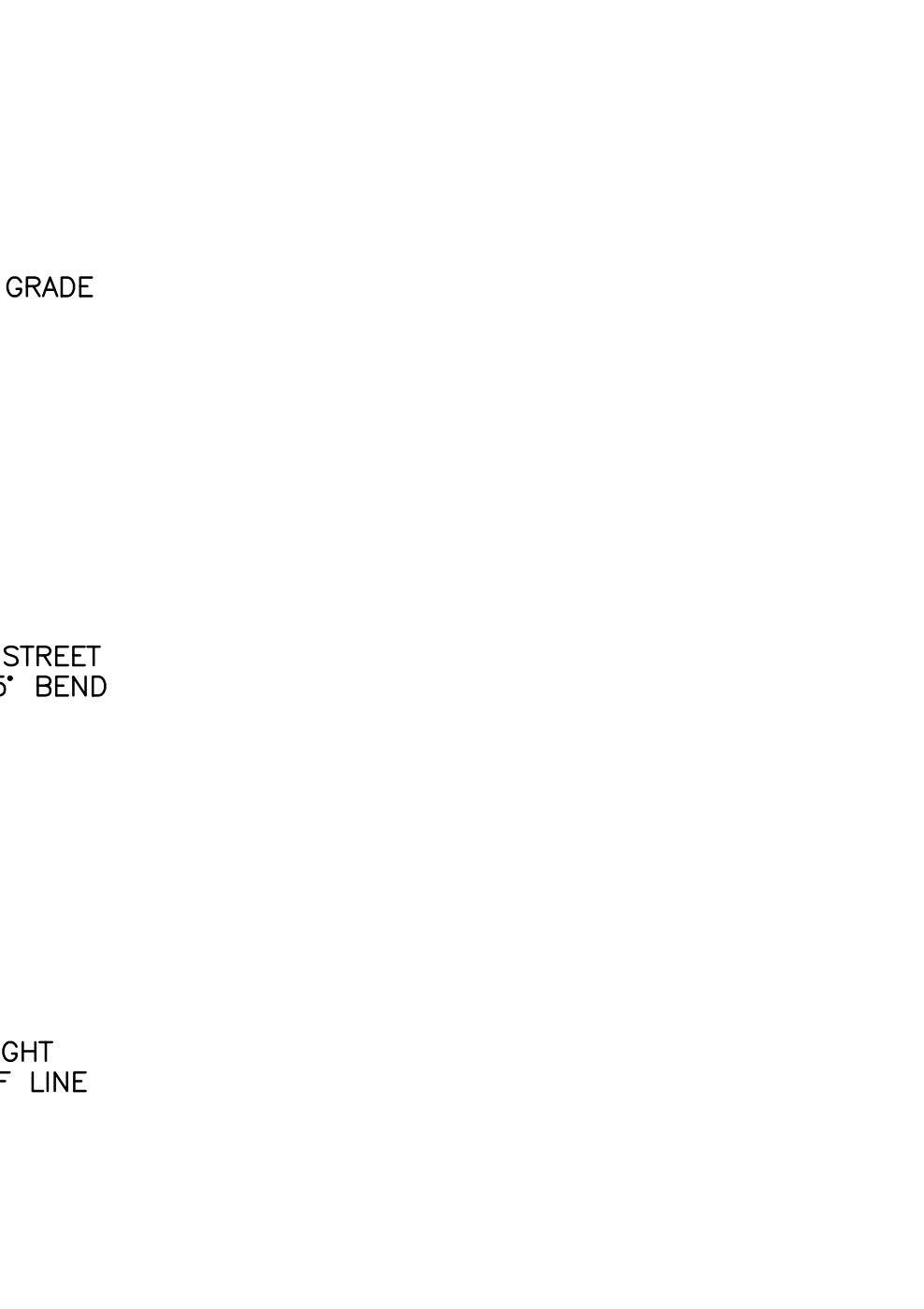
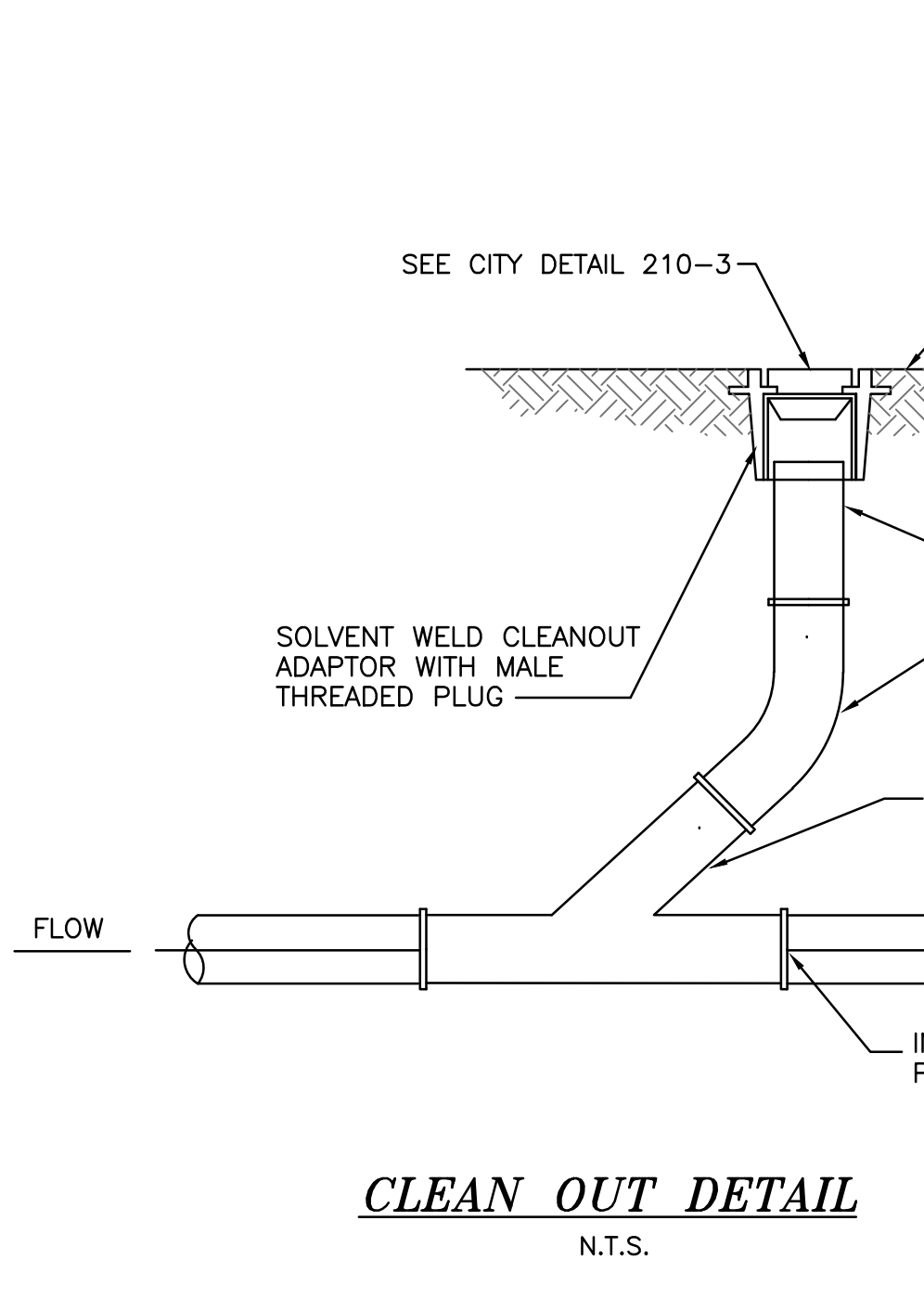
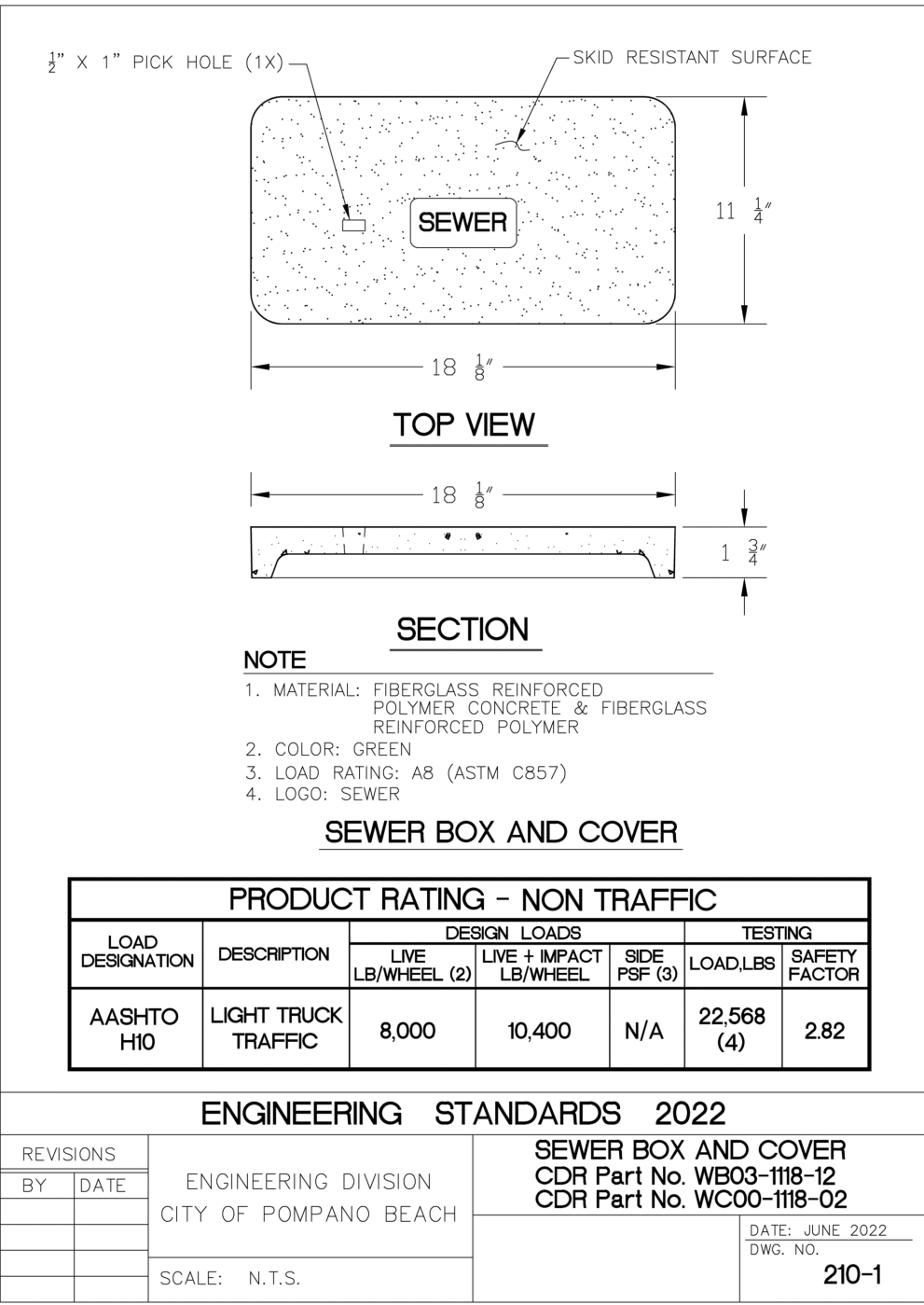
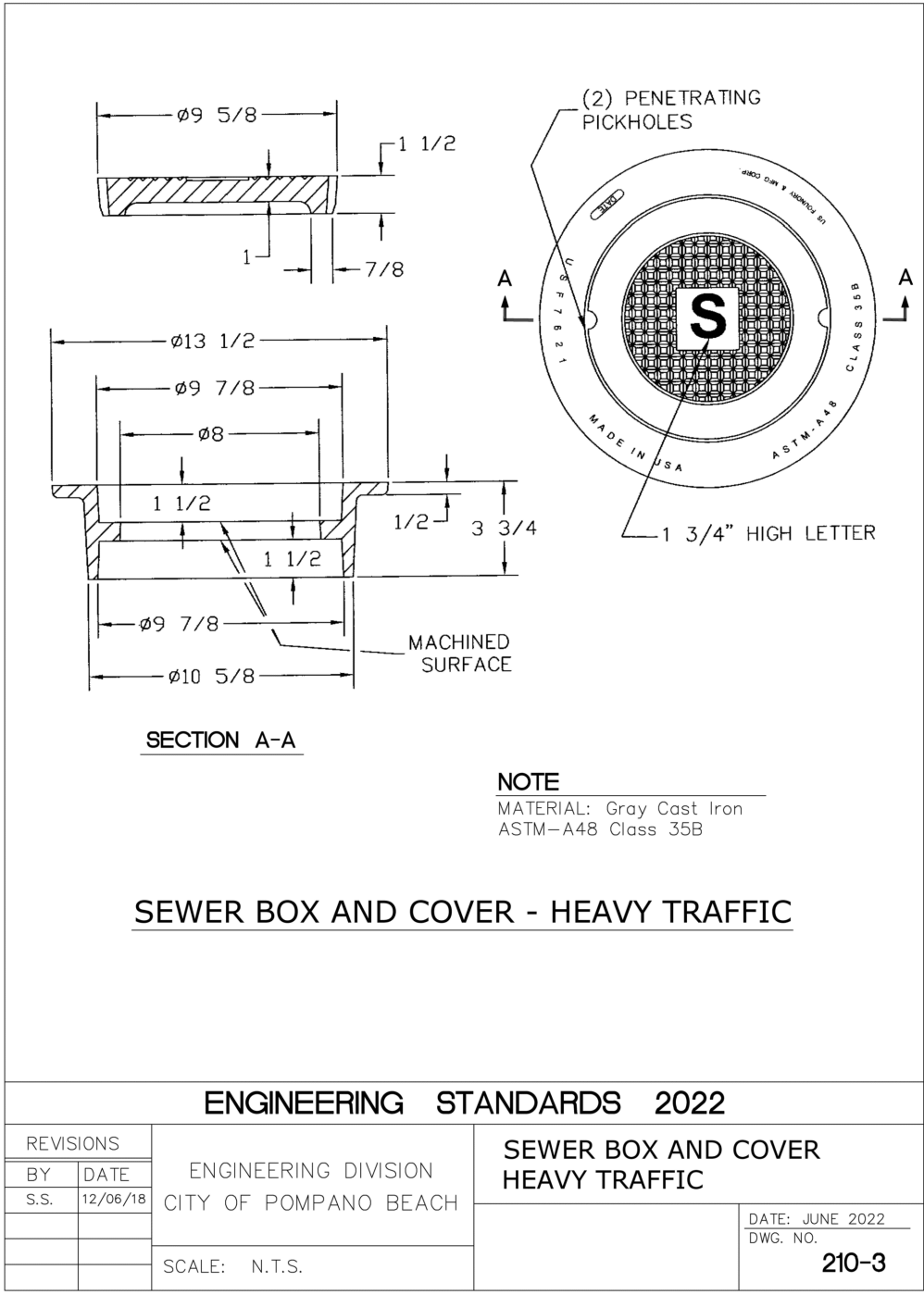
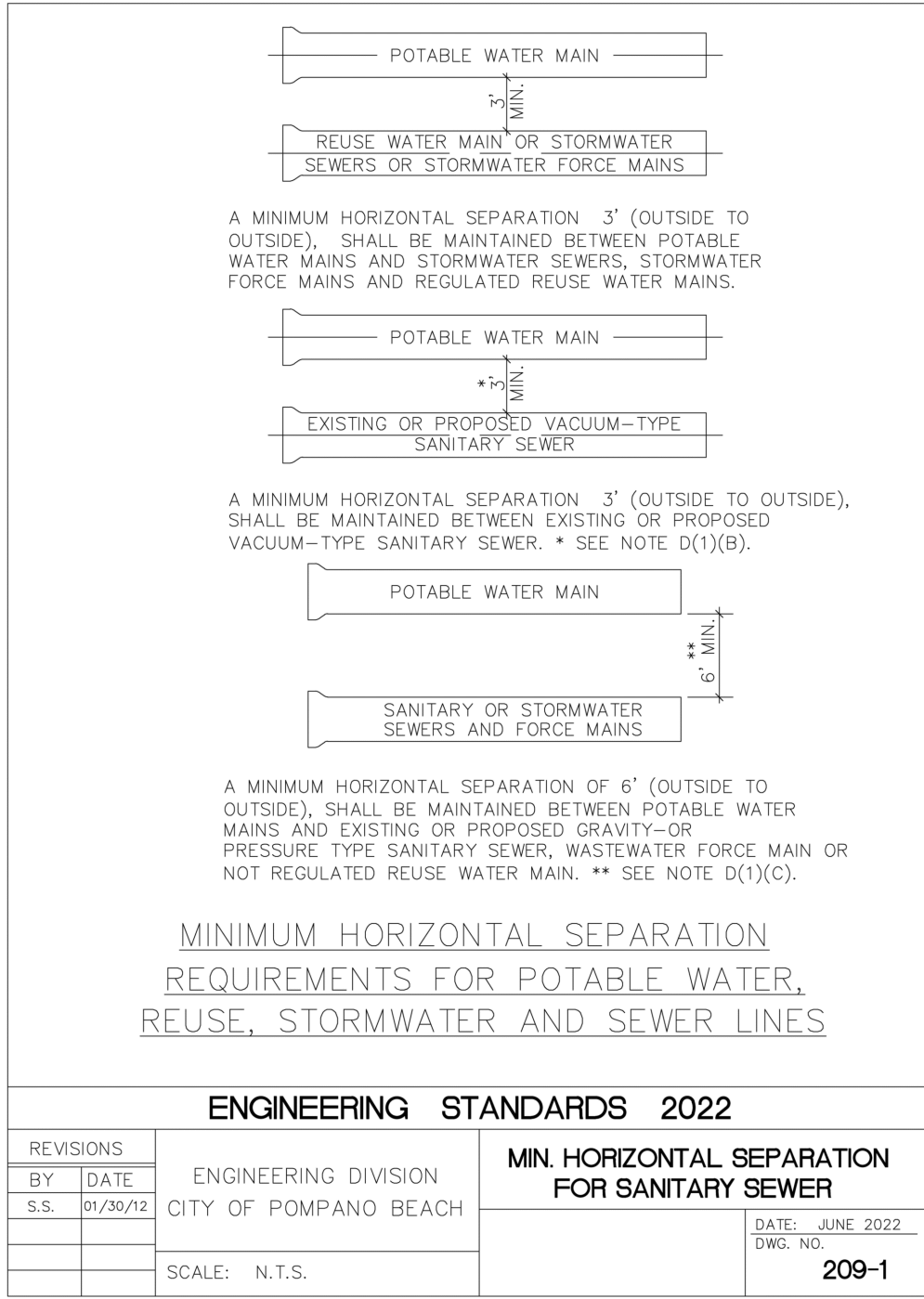
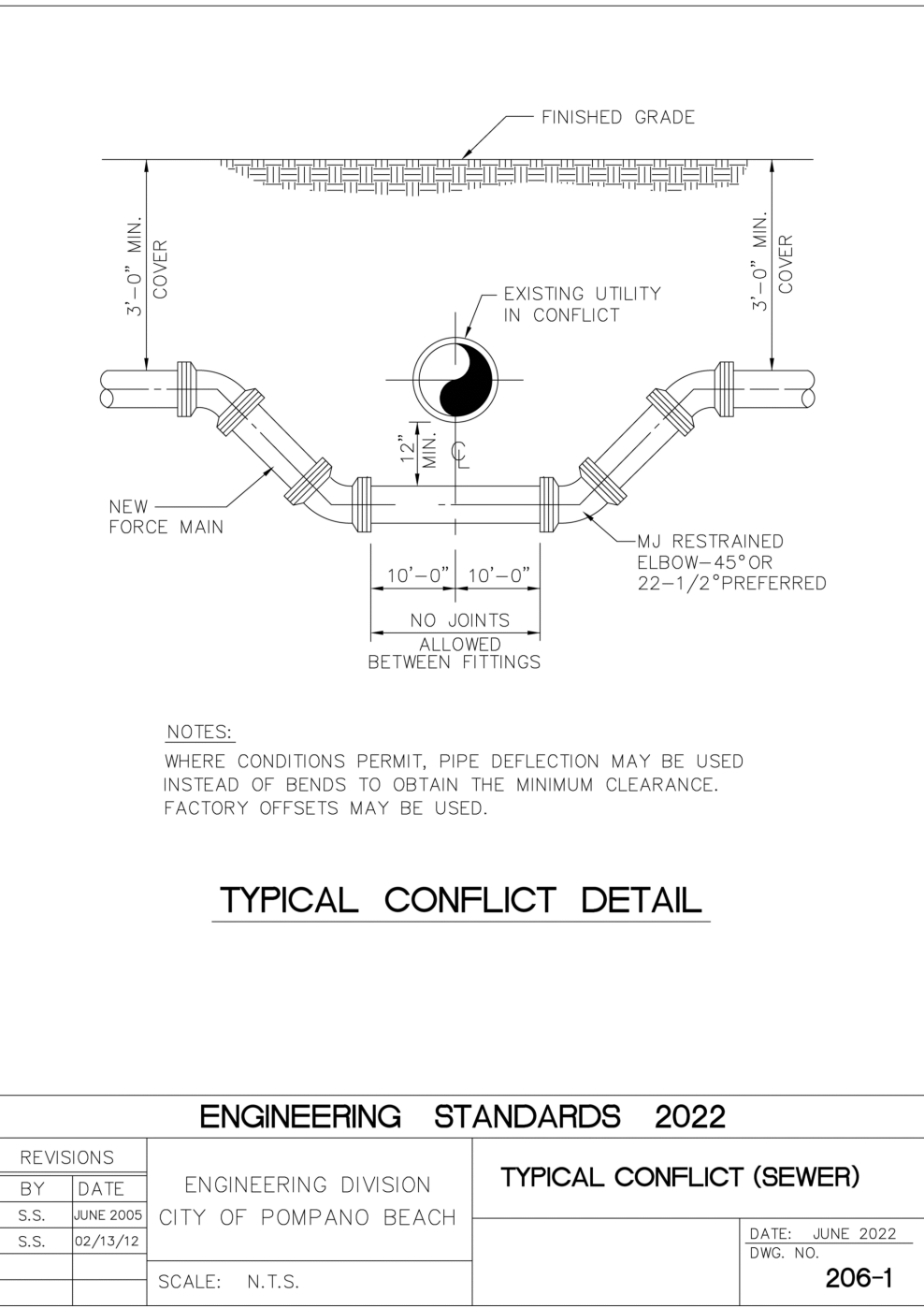
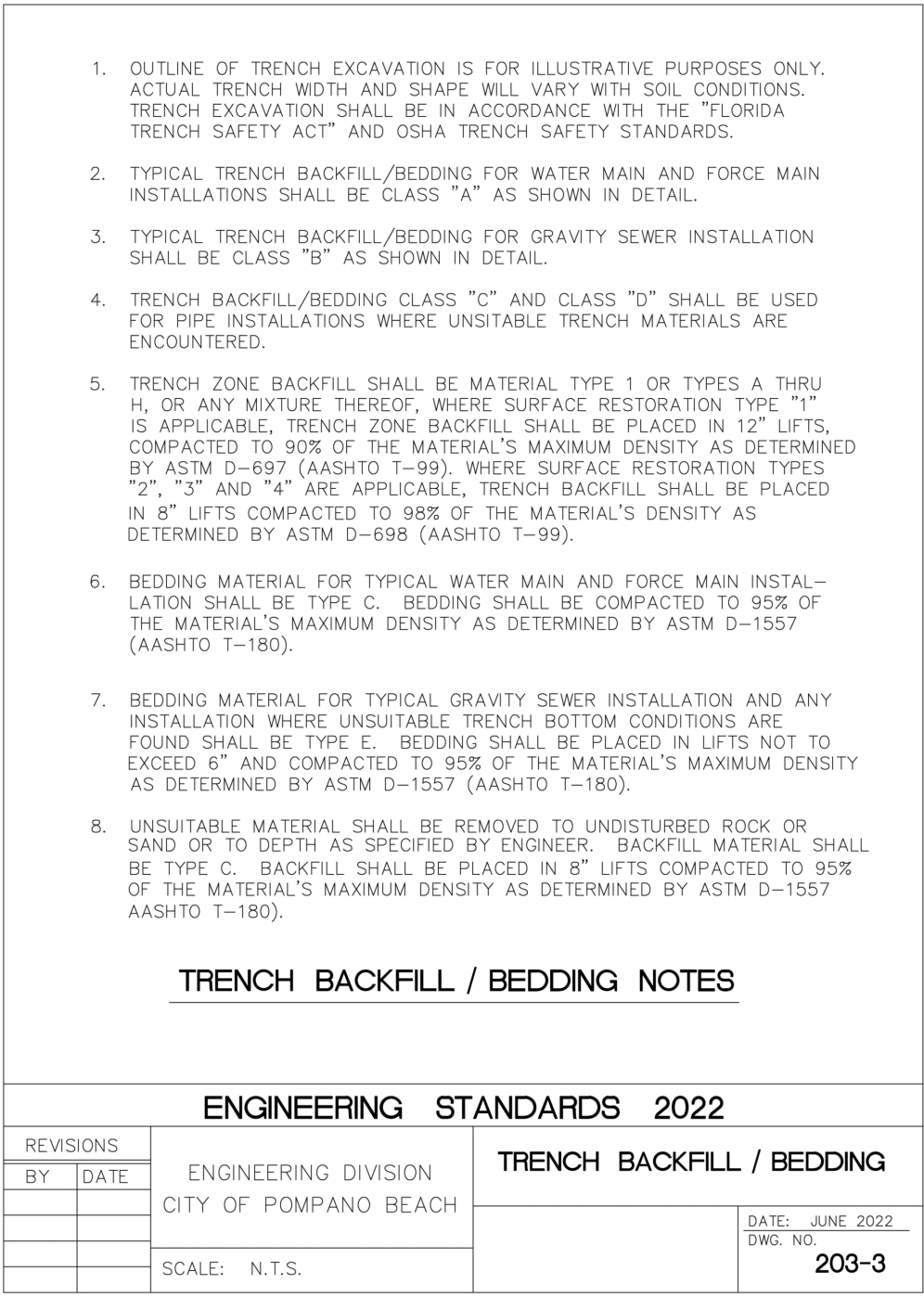
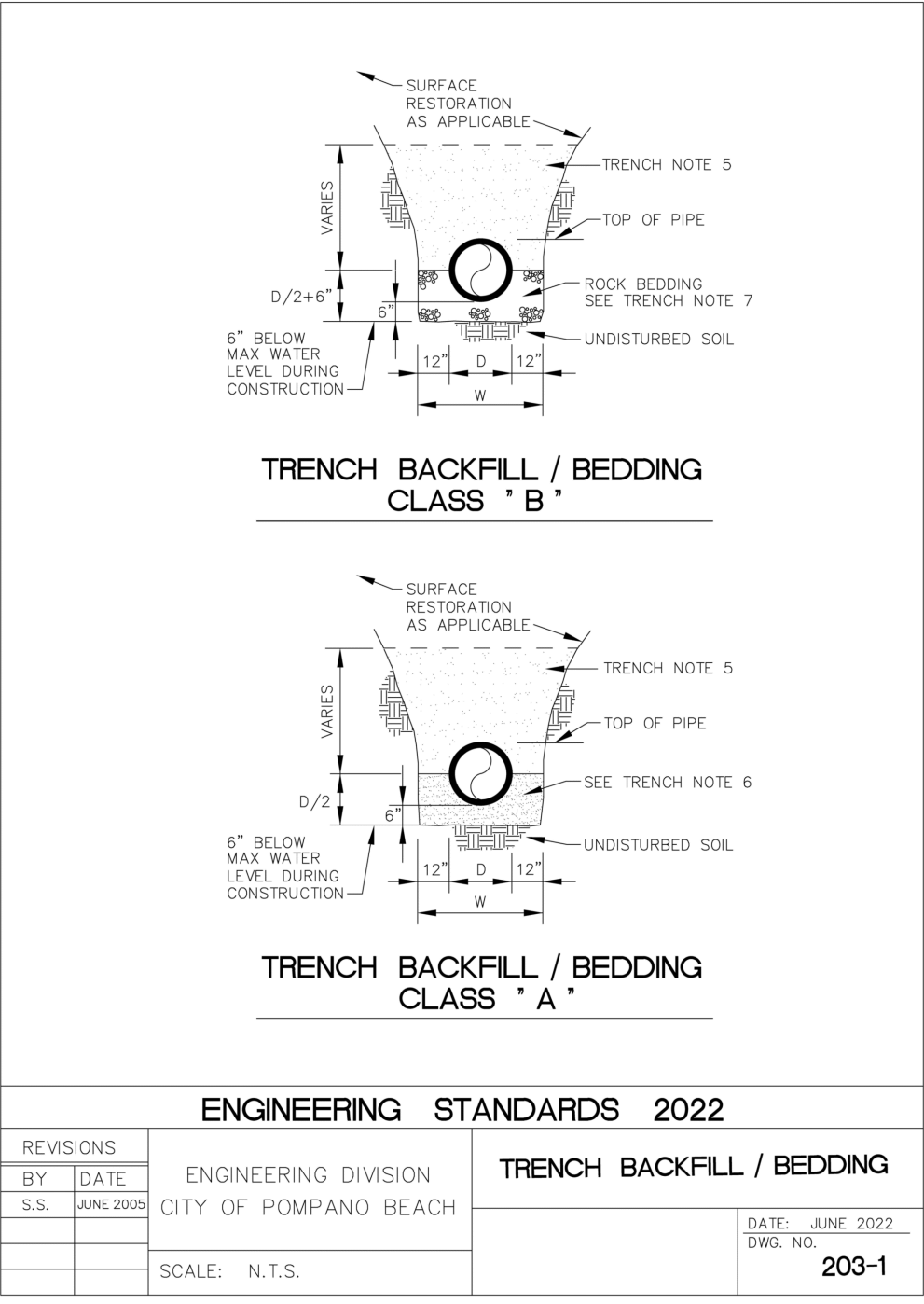
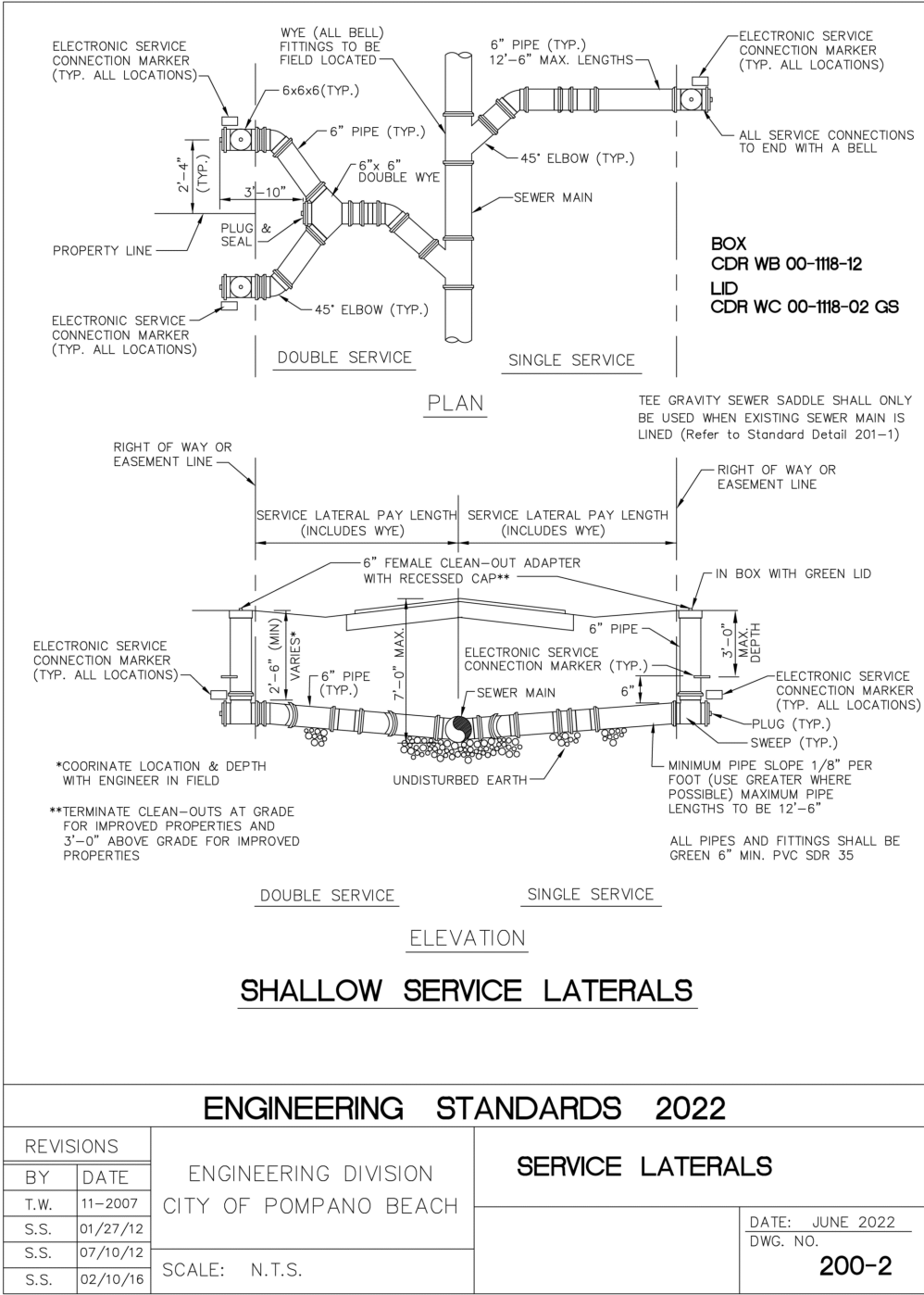
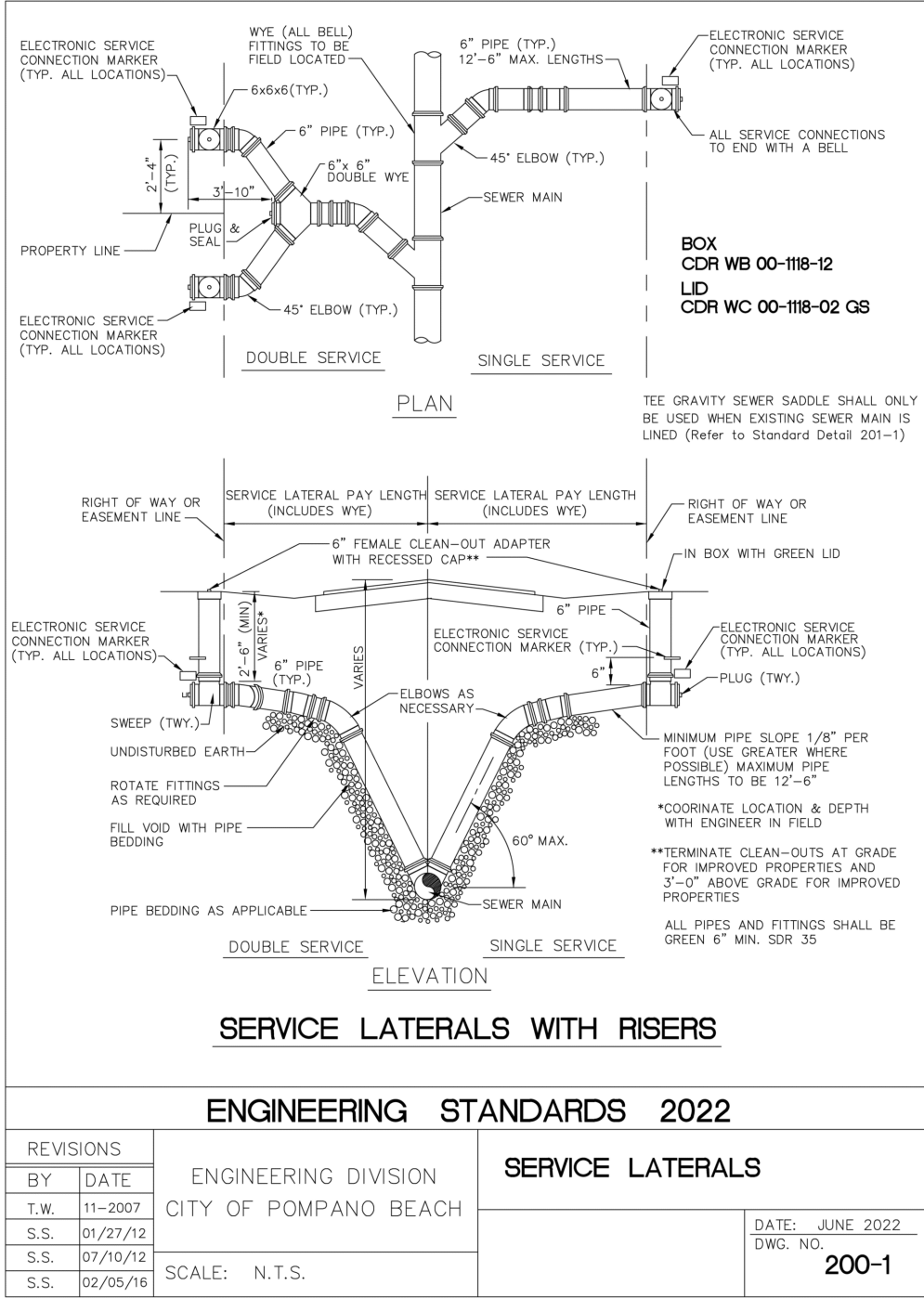


J:\CAD\23-16\CAD_Files\23-16_DETAILS.dwg -- 10/4/2024 11:21 AM



FINAL APPROVAL

SCALE: N.T.S.

DRAWN BY: HS

DESIGNED BY: SCH

CHECKED BY: SCH

FIELD BOOK: N/A

HOLLAND ENGINEERING
CIVIL ENGINEERING SOLUTIONS
301 SW 7th Street
Fort Lauderdale, Florida 33315
Phone: 954.367.0371
Certificate of Authorization 7325

SUSAN C. HOLLAND
STATE OF FLORIDA PROFESSIONAL ENGINEER
LICENSE No. 41831

REVISIONS

NO.	DATE	BY	CHK'D	DESCRIPTION
2	9/10/24	HS	SCH	CITY COMMENTS
3	10/3/24	HS	SCH	CITY COMMENTS

CONDO HOTEL
872 E. MCNAB ROAD
POMPAÑO BEACH, FLORIDA 33060

NO. OF SHEETS: 8

SHEET NO.: C-8

CAD FILE NO.

23-16

AAC

PZ23-12000045

12/16/2024

This item has been digitally signed & sealed by Susan C. Holland, P.E. Printed copies of this document are not considered signed and sealed and the signature must be verified on any electronic copies.

SANITARY DETAILS
SCALE: N.T.S.